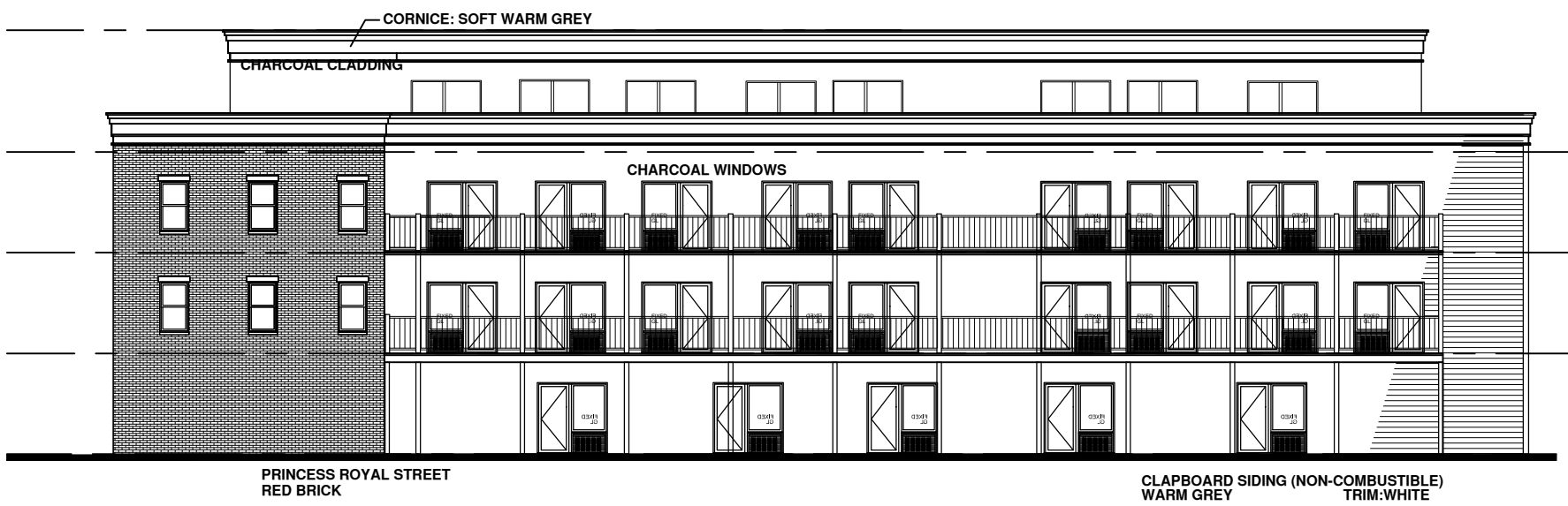
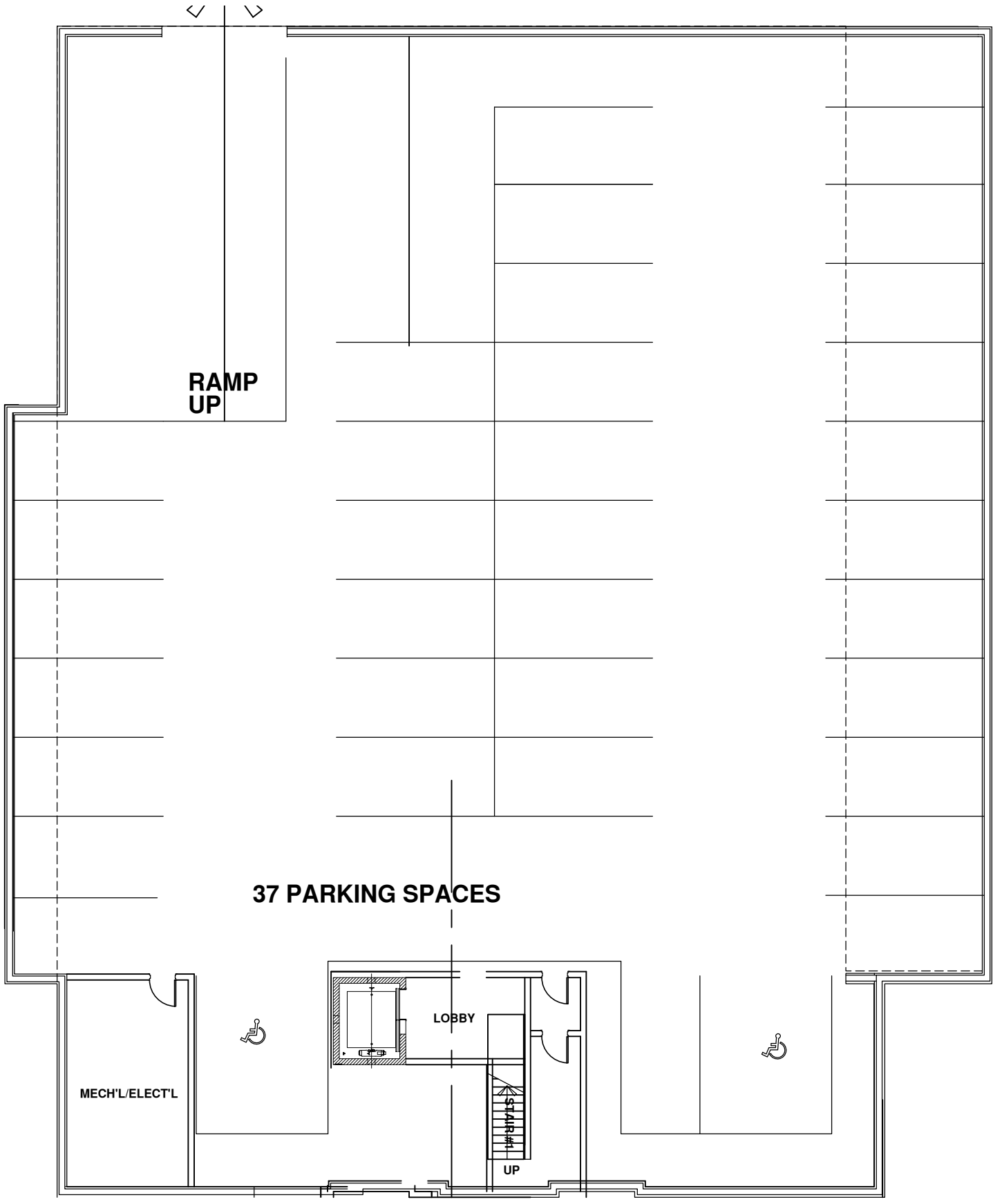


WATER STREET

PRINCESS ROYAL STREET





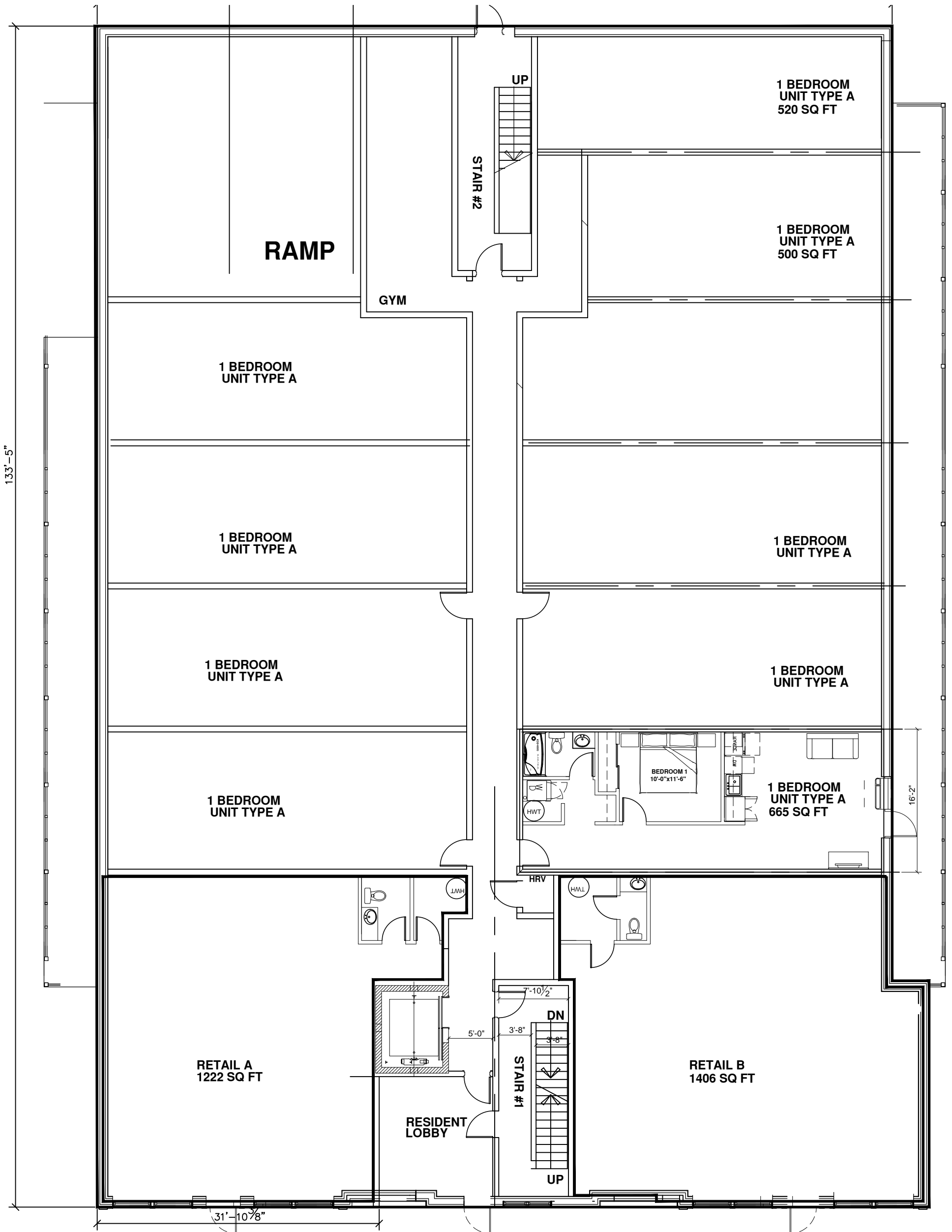
**RAMP
UP**

37 PARKING SPACES

MECH'L/ELECT'L

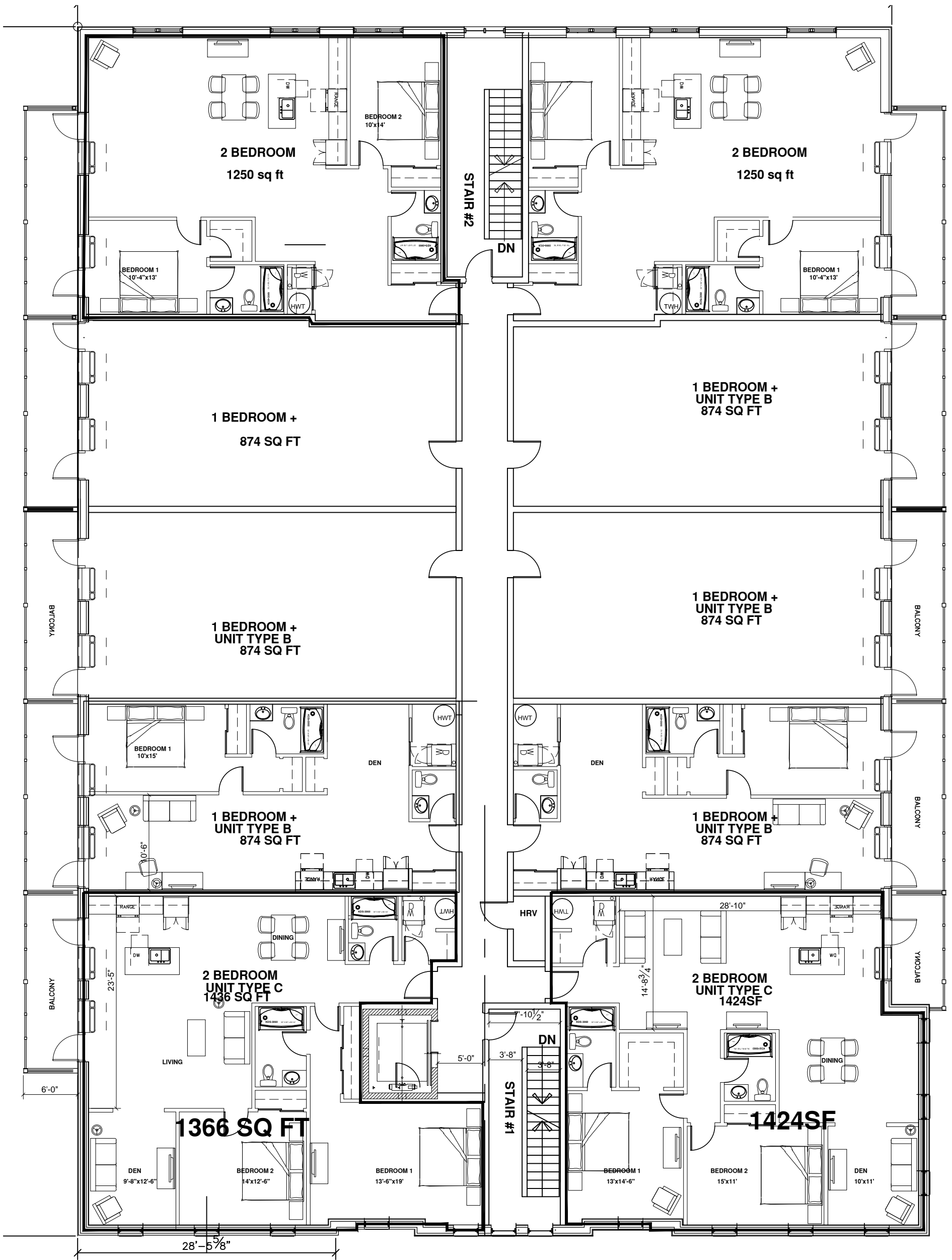
LOBBY

UP

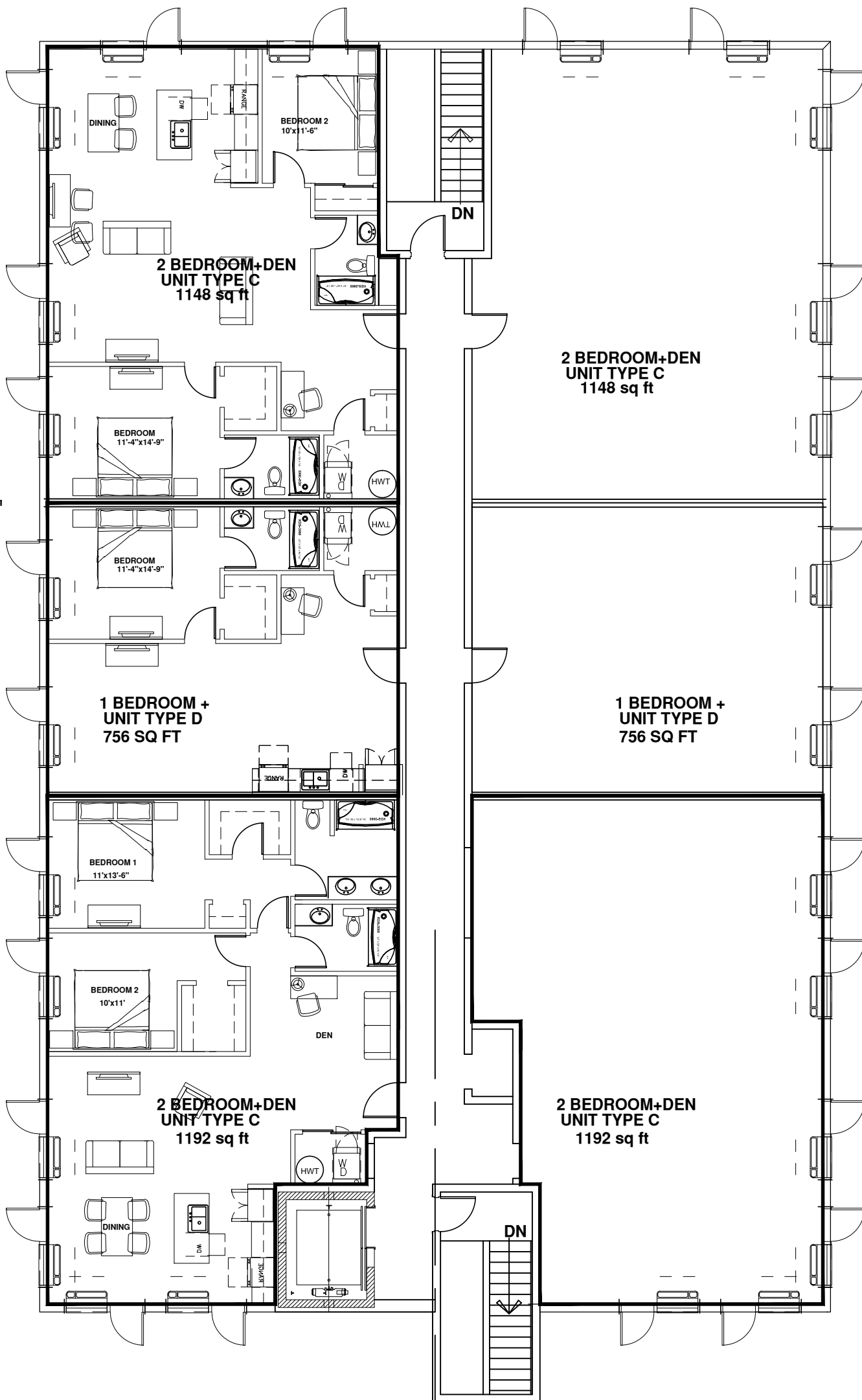


BLDG AREA: 11,373 SQ FT

**1ST FLOOR
10 UNITS
(2 RETAIL UNITS)**



**2ND FLOOR
3RD FLOOR
10 UNITS**



**4th FLOOR
6 UNITS**